

CONTENT

- 1 **IN THE BOX**
- 2 **Get to Know Eilik**
- 5 **Interact with Eilik**
- 8 **Games & Skills**
- 20 **One More Eilik, Way More Fun**
- 26 **Safety & Security**



Scan to Read
English Manual



スキャンして日本語の説明書を読む

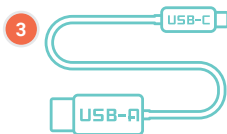
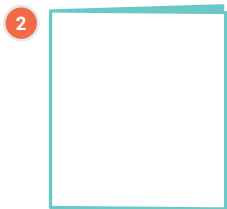
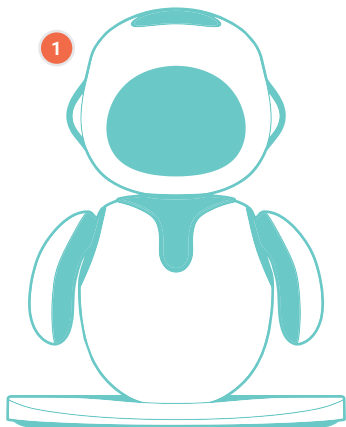


한국어 설명서를 읽으려면 스캔하세요



扫码阅读中文说明书

IN THE BOX



1. Eilik x1

2. User Manual x1

3. USB-C Cable x1

4. Conductive Tab x1

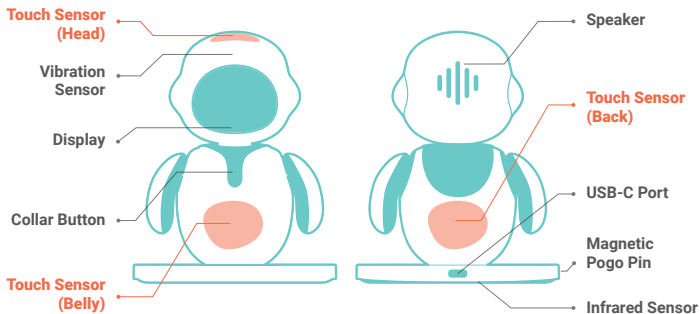
5. Food Toy x5 (Random)

6. Magnet x5

7. Double-side Tape x9

1. Get to Know Eilik

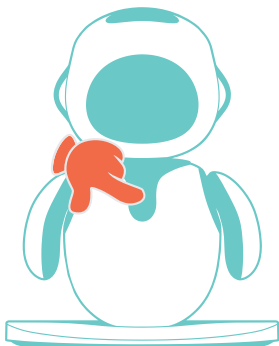
1.1 Body & Button



The Collar Button

Long press 3s+ to turn ON and OFF.

Upon activation, Eilik will initiate an animated display accompanied by audio, while subsequently exhibiting left and right rotational movements of its head, arms and body.



1.2 Functions Future updates will be available via Eilik software.(P27)



Heart Mode (Default)



Left or Right



Dance to Beat
Eilik ≥ 1



Talking Toy



Monster Shooter



Fishing Game



Puppet Toy



Festivals



Countdown Timer



Pomodoro Timer



Settings



Eilik Theater
Eilik =2



Crime Patrol
Eilik ≥ 2



Dominoes
Eilik ≥ 3



Song and Dance
Eilik ≥ 3

Menu Selection

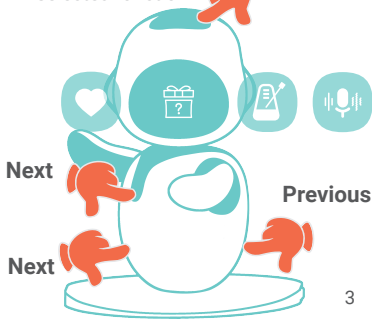
Switch functions in a **one-way loop** by pressing the Collar Button.

Touch Eilik's back to return to the previous function.

Touch Eilik's belly to advance to the next function.

Note: To prevent unintentional menu switching, avoid touching the belly and back simultaneously.

Tap the head to enter the selected function.



1.3 Charge

A charging time of 1-1.5 hours is good for Eilik.

Two Charging Statuses



While Eilik is on



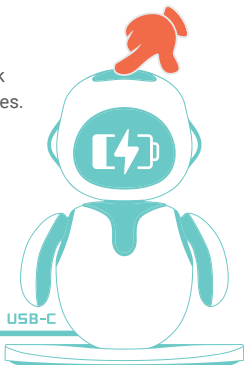
While Eilik is off

5V
1A

USB-A

When the screen is off
(**Shutdown** or **Sleep**),
touch the head to check
the two charging statuses.

If Eilik does not display any
charging status, please replace
the USB cable and try again.



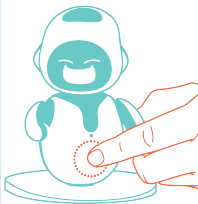
2. Interact with Eilik

2.1 Different Interactions

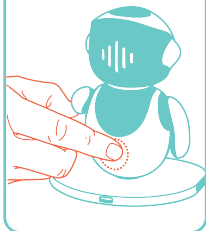
1. Touch the head



2. Touch the belly

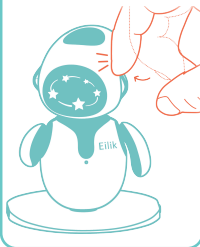


3. Touch the back



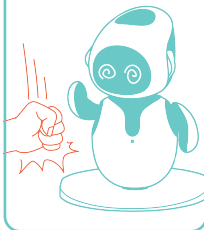
4. Hit the forehead

Try harder



5. Slap table

Try harder



6. Take off the ground

To soothe Eilik, hold its back and pet its head. (P26)



Check out P18-19 for Settings of the above interactions 4, 5, 6.



2.2 Heart Mode & Idle State



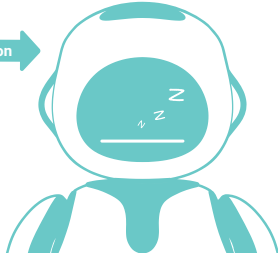
Heart Mode (Default)

Idle State

Sleep State

Eilik enters Heart Mode (Interactive Mode) by default after startup.

In the absence of interaction, Eilik will transition to Idle State, engage in self-amusement, and eventually enter a sleep state.



How to trigger?



TOUCH the Head



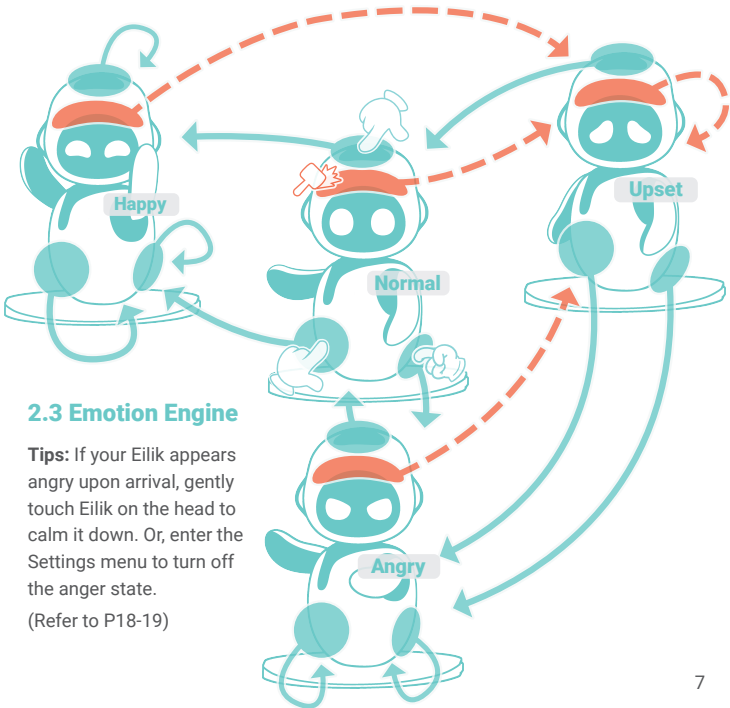
TOUCH the Back



TOUCH the Belly



Hit the Forehead



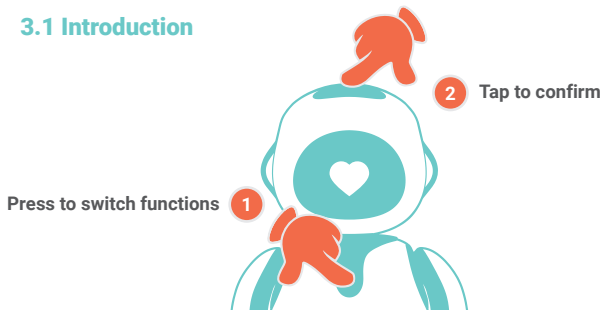
2.3 Emotion Engine

Tips: If your Eilik appears angry upon arrival, gently touch Eilik on the head to calm it down. Or, enter the Settings menu to turn off the anger state.

(Refer to P18-19)

3. Games & Skills

3.1 Introduction



Heart Mode (Default)



Left or Right



Dance to Beat



Talking Toy



Monster Shooter



Fishing Game



Puppet Toy



Festivals



Countdown Timer



Pomodoro Timer



Settings

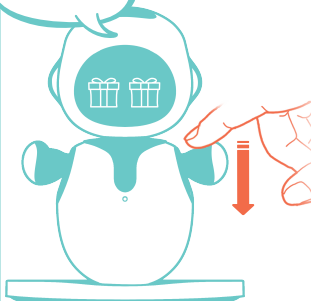
Future updates
will be available
via Eilik software.

3.2.1 Left or Right



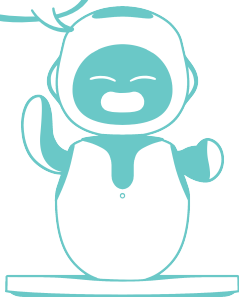
1. Guess which hand

Left or right



2. Repeat guessing

Wrong!
Try again!



3.2.2 Dance to Beat



1. Create rhythms by clapping hands, a metronome or a speaker



Fast



Medium



Slow

2. Eilik will listen to the beat and dance on different rhythms



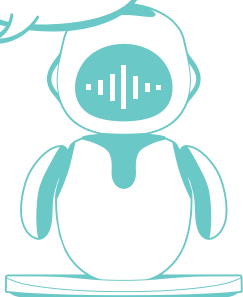
The dance will last for 3 minutes; touch the head to stop dancing.

3.2.3 Talking Toy



1. Recording

How do you do!

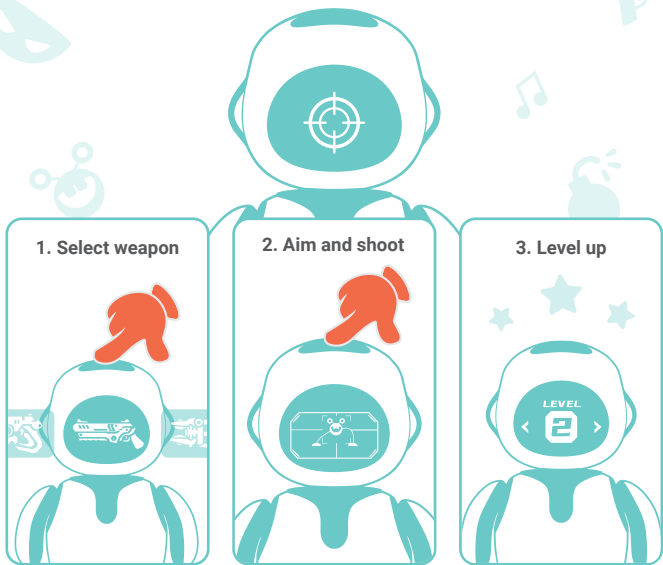


2. Repeating

How do you do!



3.2.4 Monster Shooter



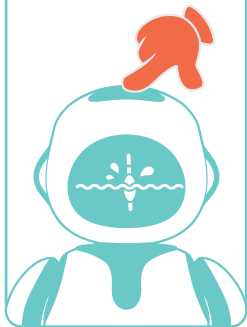
Press the **Collar Button** to exit the game.

This is an intense and fast-paced shooter game to train your reaction. Choose from a wide range of awesome weapons, shoot at evil monsters and protect our base. More weapons and challenges will be unlocked as you level up. Will you be able to make it to the end?

3.2.5 Fishing Game

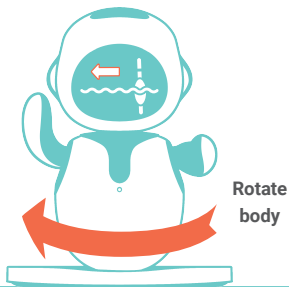
1. Cast a fishing rod

Wait for a moving buoy
(fish is hooked)



2. Quickly turn Eilik's body in the arrow direction on the screen

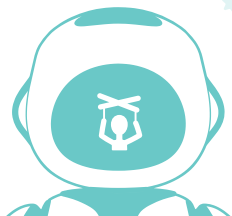
Keep the buoy in the middle until
the fish is exhausted



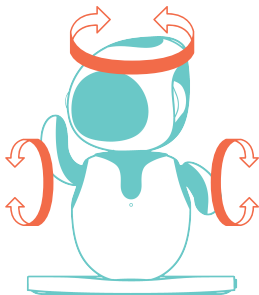
If the buoy swings violently, the fish will be off the hook.

Ask **THE OLD MAN** how to fish a giant marlin.

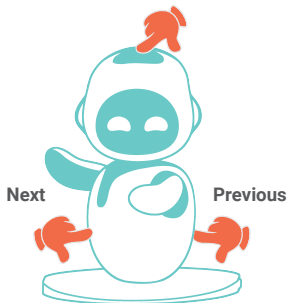
3.3.1 Puppet Toy



1. Rotate the head or hands to pose



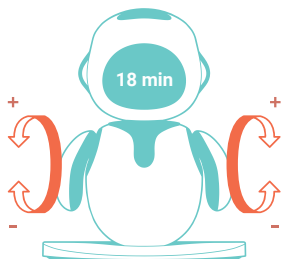
2. Tap the head to switch expression groups



3.3.2 Countdown Timer

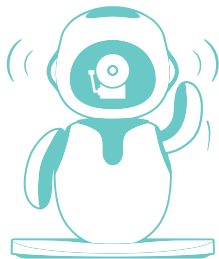


1. Rotate hands to set time



2. Tap to confirm

3. A bell ringing, time's up



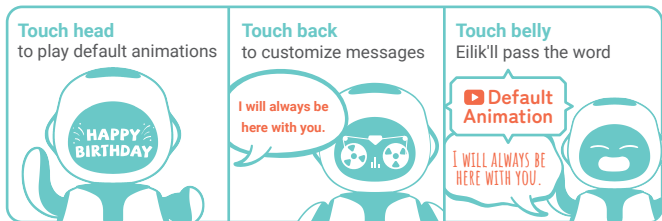
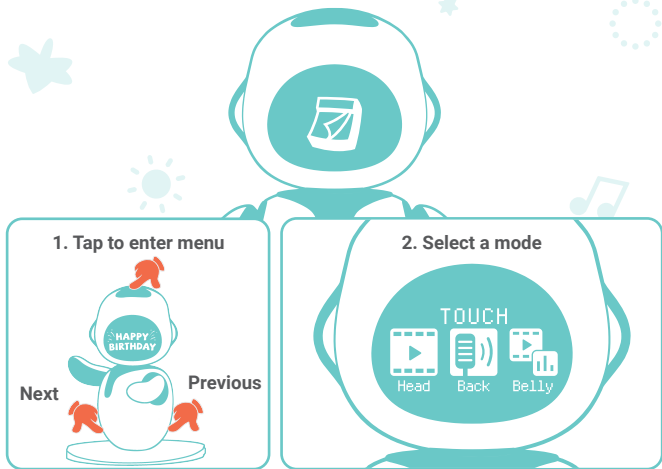
4. Tap to stop

3.3.3 Pomodoro Timer



There will be a prompt sound to remind you of the time. You can also touch the head to check the time.

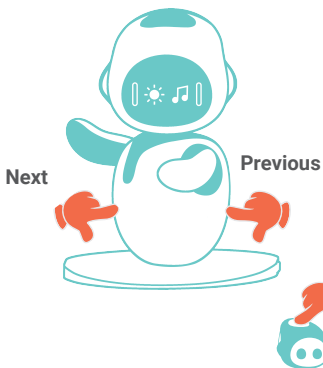
3.3.4 Festivals



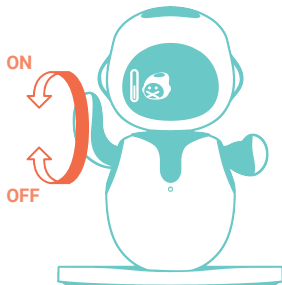
3.3.5 Settings

Touch the head to enter Settings.

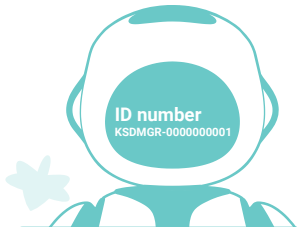
1. Tap BELLY to switch the settings interface



2. Lift Eilik's arm to turn on, lower it to turn off



3. Tap head to confirm settings



In Settings, tap Eilik's back to display the ID number.

Settings Interface



Sensitivity to height **3**
2
1
When turned off, Eilik will not react to the base leaving the flat surface. **OFF**



Sensitivity to quake **3**
2
1
When turned off, Eilik will not respond to any quakes or impacts. **OFF**

Weapon/Anger Toggle **ON**
When turned off, Eilik will not express angry or aggressive behavior. **OFF**



Equipment Access **2**
1
When turned off, Eilik will not be allowed to access any long gear to avoid robot body damage. **OFF**

Mute in Idle Mode **ON**
When turned on, Eilik will remain silent in Idle Mode. **OFF**



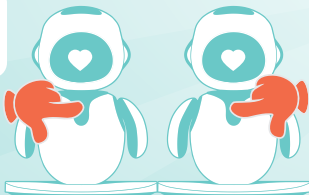
Retro Screen Style **OFF**
VHS
Dot
Glitch
Adjust Eilik's screen style to a retro vibe with three switch settings: VHS, Dot, or Glitch mode.

ONE MORE EILIK



Snap!

1. Set all Eilik in default Heart Mode, snap to connect.

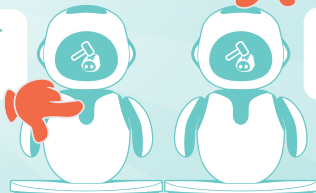


WAY MORE FUN



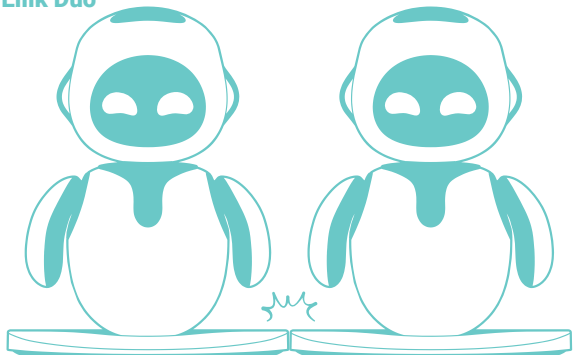
Snap!

2. Press any collar button to switch functions.



3. Tap any Eilik's head to start or confirm.

4.1 Eilik Duo



Eilik Theater



Clapperboard



Crime Patrol



Dance to Beat



Puppet Toys



Eilik Theater



Tap any touch sensor to start



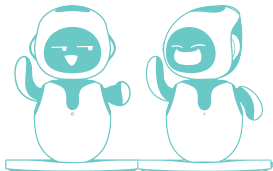


Clapperboard

Tap any touch sensor to start

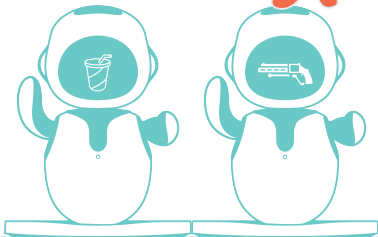


Choose a story line to play



Crime Patrol

Tap to disarm criminals within a limited time



Note: Avoid the distraction props like, bomb, candy cane, etc.



Dance to Beat

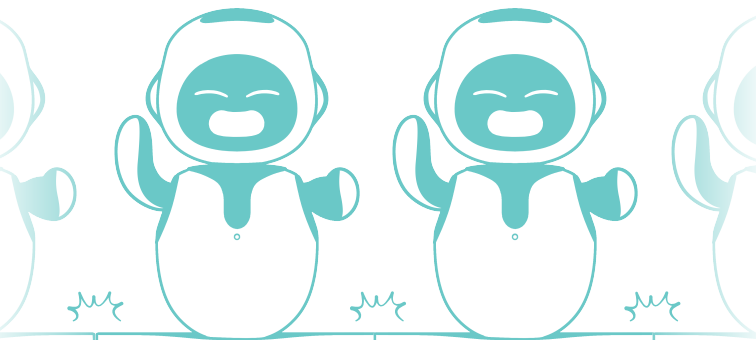
Refer to page 10



Puppet Toy

Refer to page 14

4.2 Eilik Party



Dominoes



Song and Dance



Crime Patrol



Dance to Beat

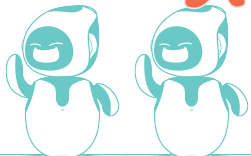


Puppet Toys



Dominoes

Tap any touch sensor
to change moves

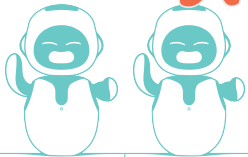


Try another move

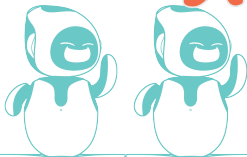


Song and Dance

Tap any touch sensor
to change dance



Try another song



Crime Patrol

Refer to page 23



Dance to Beat

Refer to page 10



Puppet Toy

Refer to page 14

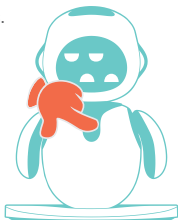
More games are coming...

5. Safety & Security

5.1 Precautions

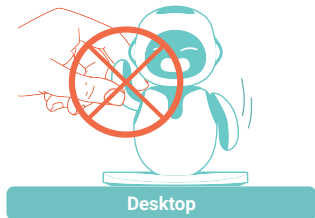
5.1.1 Force Reboot

If Eilik is **STUCK** or frozen after booting, hold down the button for **15s** to **Force Reboot**. Avoid performing this action during the charging process.



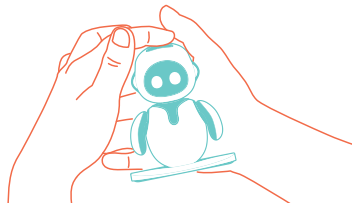
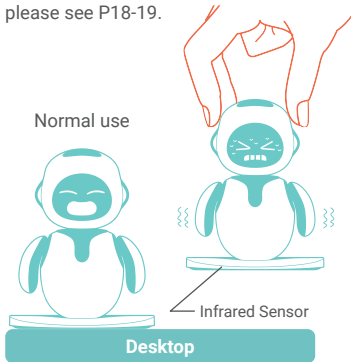
5.1.2 Avoid Injuries

To avoid potential injuries, don't grab at Eilik's hand when it is moving, or put your finger under its armpit!



5.1.3 Hover Detection

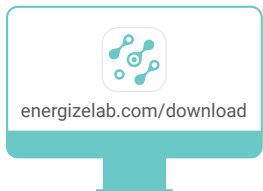
Eilik has an infrared sensor at the base that triggers fear and even crying when lifted off the ground. To comfort Eilik, simply hold it by the back and gently fondle its head, or quickly place it back on a flat surface. For instructions on disabling this feature, please see P18-19.



5.1.4 Firmware Update

Firmware Update is the operation of upgrading the Eilik firmware to the latest version, generally used to add new features, improve performance, fix bugs, or enhance device security. **(Recommend timely updates!)**

1 Download Software

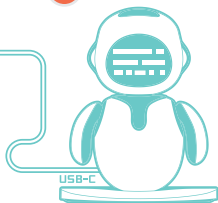


2 Connect to PC

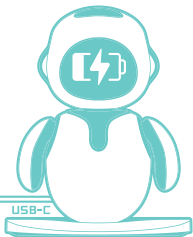


Don't unplug the USB-C cable or move the robot when the update is in progress.

3 Start to Update



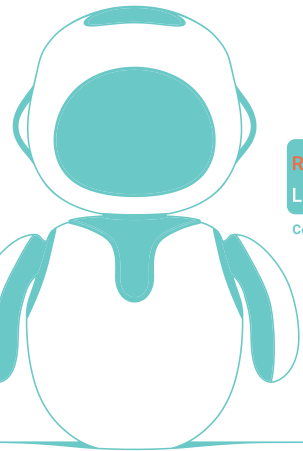
4 Update Success



Note:

If you encounter any problems during the update process, please visit energizelab.com/supportview/eilik-self-check-manual or [youtube.com/@energizelab/playlist](https://www.youtube.com/@energizelab/playlist) (About Eilik) or scan this QR code on the right to watch videos for a solution.





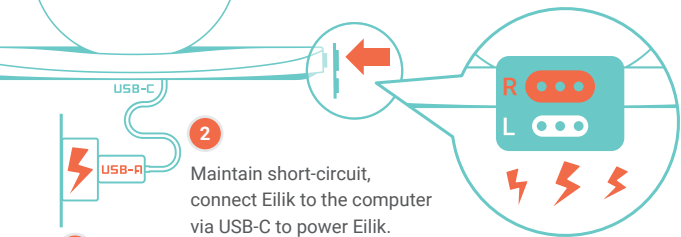
Conductive tab
R side

5.1.5 Reset Procedure

Note: This operation is generally utilized to address the Failure to Boot issues such as unresponsiveness, automatic shutdown after booting, or a blank startup screen. Its purpose is to restore the normal functioning of Eilik.

1

Use the **Conductive tab R side** to cling to the Magnetic Pogo Pin on the right side of Eilik.



2

Maintain short-circuit, connect Eilik to the computer via USB-C to power Eilik.

3

Once the reset is finished, a pop-up interface will prompt you to update the firmware. Please remove the conductive tab after the prompt appears, and start the firmware update.

Check out Eilik self-check e-manual for further solutions on P27 if the reset doesn't work.

ERROR!
MISSING FIRMWARE
PLEASE CONNECT USB
TO UPDATE

5.1.6 Format SD Card



This method is to **COMPLETELY FORMAT** the SD card.

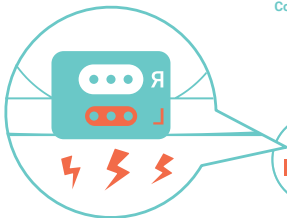
All the contents of the SD card will be **ELIMINATED**.

Please operate with caution.

- 1 Use the **Conductive tab L side** to cling to the Magnetic Pogo Pin on the left side of Eilik.



Conductive tab
L side



- 2 Maintain short-circuit, connect Eilik to the computer via USB-C to power Eilik. The SD card formatting prompt will appear on the screen. Patiently wait for the formatting process to complete.



- 3 Once the format is finished, a pop-up interface will prompt you to update the firmware. Please remove the conductive tab after the prompt appears, and start the firmware update.

Due to different PC configurations, network status and other conditions, the speed of update recovery varies. A repair failure may occur if the computer hibernates during the update process or the network is not smooth. Please be patient and try a few more times! (Tips: The update speed will be faster with a Windows computer.)

Check out Eilik self-check e-manual for further solutions on P27 if the format doesn't work.

5.2 Security Instructions

Improper use of the product can easily cause damage to the product or may endanger personal and property safety. Please keep and use this product in strict accordance with the following safety instructions:

1. This product cannot be washed.
2. Be sure to use the local safety standard charger for this product to charge, to prevent electric shock or battery damage.
3. Serious fall and intense physical actions including stressing, throwing, trampling and squeezing, etc. shall be avoided.
4. Be sure to there is no liquid infiltration/splashing into the product to avoid battery, circuit damage or short-circuit.
5. Disassembly or disintegration of this product by non-professionals is strictly prohibited.
6. It is strictly prohibited to put this product into harsh environments such as water, fire (including close to stove, heating and other heat sources) or exposure to temperatures above 60°C (140°F).
7. When the weather is hot, please do not

put this product in the outside unmanned car or other sun exposure places.

8. If you don't use this product for a long time, please store it in a cool and dry environment.
9. This product contains lithiumion batteries. It is strictly prohibited to open the product's shell to avoid possible damage to the core or other hazards.
10. Please full charge this product when it's used for the first time.
11. When charging the product, you should ensure your presence, unplug the power when you leave or go out for a long time.
12. When this product is fully-charged, please remove the connection cable in time, to avoid damaging battery capacity.
13. High brightness or prolonged charging will damage Eilik's OLED screen, and even result in screen burn-in. Please keep the brightness in an appropriate range. Unplug the USB-C cable when Eilik is fully charged.
14. This toy contains batteries that are non-replaceable.
15. This toy is only to be connected to equipment bearing either of the following symbols.



5.3 Warranty Policy

Energize Lab provides a 90-day Warranty Policy. The specific warranty services are as follows:

1. During the Limited Warranty period, Energize Lab will repair or replace any parts of the Product that are defective or malfunction during normal usage. Energize Lab reserves the right to use new or refurbished replacement parts in repair of the Product.
2. A purchase receipt or other proof of the date of purchase is required in order to claim the benefit of this warranty.
3. This limited warranty applies only to products manufactured by or for Energize Lab and that can be identified by Energize Lab's trademark, trade name or logo. The limited warranty does not apply to any non-Energize Lab product or software.
4. The Limited Warranty extends only to Purchasers who purchased the Product on official channels and is not assignable or transferable to any subsequent purchaser.
5. Notwithstanding the foregoing terms of this warranty, Energize Lab reserves the right at all times, at its sole option and discretion, to refund to you the purchase price paid by you for this

Product in full and final settlement of Energize Lab's obligations under this warranty.

Energize Lab will not provide warranty services in the following circumstances:

1. Improper storage, misuse, collision, negligence, abuse, exposure to liquid, infusion, moisture, accident, incorrect use of parts other than the product;
2. External causes and force majeure such as fire, flooding, sand, dirt, windstorm, lightning, or earthquake;
3. Exposure to extreme weather conditions, theft, loss, or improper use of any electrical source;
4. Improper testing, operation, maintenance, installation, or any alteration or modification of Product;
5. Cosmetic damage, including but not limited to scratches, dents or broken plastic, or normal wear and tear;
6. Usage of product other than its normal and customary manner;
7. The term of validity has exceeded 90 days.

5.4 Regulatory Compliance



FCC Compliance Statement

This device has been tested and found to comply with the limits for a Class B digital device, pursuant to Part 15 of the FCC Rules. These limits are designed to provide reasonable protection against harmful interference in a residential installation. This equipment generates, uses and can radiate radio frequency energy and, if not installed and used in accordance with the instructions, may cause harmful interference to radio communications.

However, there is no guarantee that interference will not occur in a particular installation. If this equipment does cause harmful interference to radio or television reception, which can be determined by turning the equipment off and on, the user is encouraged to try to correct the interference by one or more of the following measures:

- Reorient or relocate the receiving antenna.
- Increase the separation between the equipment and receiver.
- Connect the equipment into an outlet on a circuit different from that to which the receiver is connected.
- Consult the dealer or an experienced radio/TV technician for help.

This device complies with Part 15 of the FCC Rules. Operation is subject to the following two conditions:

(1) this device may not cause harmful interference, and (2) this device must accept any interference received, including interference that may cause undesired operation.

Caution: changes or modifications not expressly approved by the party responsible for compliance could void the user's authority to operate the equipment.



EU WEEE Statement

The symbol means that this product shall be disposed of separately from household waste according to local laws and regulations in the EU. When this product reaches its end of life, take it to a collection point designated by local authorities for the recycling of waste electrical and electronic equipment. The separate collection and recycling of your product at the time of disposal will help conserve natural resources and ensure that it is recycled in a manner that protects human health and the environment.



UK Declaration of Conformity

Shenzhen Zhuneng Technology Co., Ltd. hereby declares that this device is in compliance with the essential requirements and other relevant provisions of Toy (Safety) Regulations 2011 and Electromagnetic Compatibility Regulations 2016.



EU Declaration of Conformity

Shenzhen Zhuneng Technology Co., Ltd. hereby declares that this device is in compliance with the essential requirements and other relevant provisions of Directive 2014/30/EU.



PSE Certification

Shenzhen Zhuneng Technology Co., Ltd. hereby declares that this device is in compliance with the essential requirements and other relevant provisions of Ministerial Ordinance For Determining Technical Standards For Electrical Appliances.



KC Certification

Shenzhen Zhuneng Technology Co., Ltd. hereby declares that this device has been registered under the Clause 3, Article 58-2 of Radio Waves Act.

Tag #Eilik on social media to tell your stories with Eilik.

Meet other like-minded robot lovers :D

TO LEARN MORE VISIT: energizelab.com

NEED SOME SUPPORT VISIT: energizelab.com/support

JOIN OUR COMMUNITY:



 Facebook

 Youtube

Designed by Energize Lab, assembled in China.

Copyright © 2024 Shenzhen Zhuneng Technology Co., Ltd. All rights reserved.
Energize Lab and Eilik are trademarks of Shenzhen Zhuneng Technology Co., Ltd.